

DUBAI HILLS ESTATE

GOLFVILLE

BLOCK A | 1 BEDROOM

UNIT 6 | LEVEL 1, 2 - 7, 8 - 13

| | | |
|--------------|---------------|-------------|
| SUITE AREA | 476.63 Sq.ft. | 44.28 Sq.m. |
| BALCONY AREA | 28.09 Sq.ft. | 2.61 Sq.m. |
| TOTAL AREA | 504.72 Sq.ft. | 46.89 Sq.m. |

UNIT 7, 8, 9 | LEVEL 1, 2 - 7, 8 - 13

| | | |
|--------------|---------------|--------------|
| SUITE AREA | 472.75 Sq.ft. | 43.92 Sq.m. |
| BALCONY AREA | 32.72 Sq.ft. | 3.04 Sq.m. |
| TOTAL AREA | 505.47 Sq.m. | 46.96 Sq.ft. |

UNIT 10 | LEVEL 1, 2 - 7, 8 - 13

| | | |
|--------------|---------------|-------------|
| SUITE AREA | 472.43 Sq.ft. | 43.89 Sq.m. |
| BALCONY AREA | 32.72 Sq.ft. | 3.04 Sq.m. |
| TOTAL AREA | 505.15 Sq.ft. | 46.93 Sq.m. |

UNIT 13, 14 | LEVEL 1

| | | |
|--------------|---------------|-------------|
| SUITE AREA | 464.57 Sq.ft. | 43.16 Sq.m. |
| BALCONY AREA | 31.32 Sq.ft. | 2.91 Sq.m. |
| TOTAL AREA | 495.89 Sq.ft. | 46.07 Sq.m. |

UNIT 15, 16 | LEVEL 1

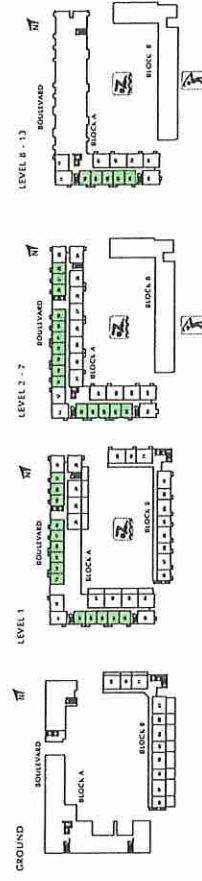
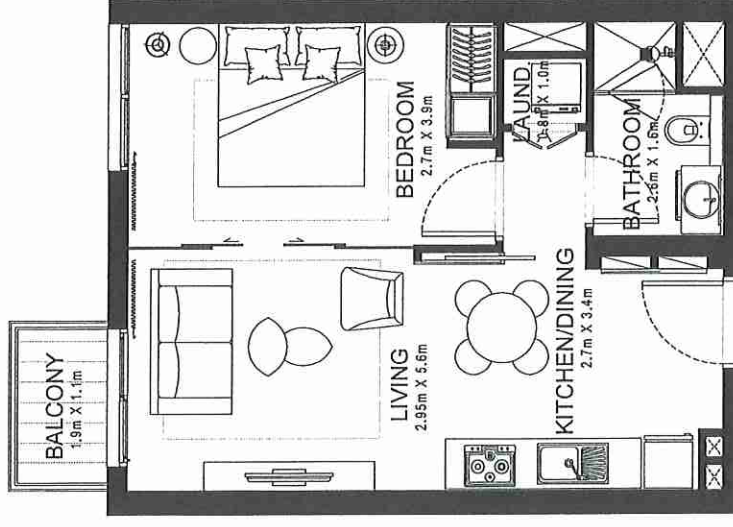
| | | |
|--------------|---------------|-------------|
| SUITE AREA | 464.89 Sq.ft. | 43.19 Sq.m. |
| BALCONY AREA | 31.32 Sq.ft. | 2.91 Sq.m. |
| TOTAL AREA | 496.21 Sq.ft. | 46.10 Sq.m. |

UNIT 17, 18, 20, 21 | LEVEL 1

| | | |
|--------------|---------------|-------------|
| SUITE AREA | 465.86 Sq.ft. | 43.28 Sq.m. |
| BALCONY AREA | 28.09 Sq.ft. | 2.61 Sq.m. |
| TOTAL AREA | 493.95 Sq.ft. | 45.89 Sq.m. |

UNIT 19 | LEVEL 1

| | | |
|--------------|---------------|-------------|
| SUITE AREA | 475.98 Sq.ft. | 44.22 Sq.m. |
| BALCONY AREA | 28.09 Sq.ft. | 2.61 Sq.m. |
| TOTAL AREA | 504.07 Sq.ft. | 46.83 Sq.m. |



FLOOR PLAN 1. All dimensions are in imperial and metric, and measured from finish to finish excluding construction tolerances. 2. All materials, dimensions, and drawings are approximate only. 3. Information is subject to change without notice, at developer's absolute discretion. 4. Actual area may vary from the stated area. 5. Drawings not to scale. 6. All images used are for illustrative purposes only and do not represent the actual size, features, specifications, fittings, and furnishings. 7. The developer reserves the right to make revisions / alterations, at its absolute discretion, without any liability whatsoever.

EMAAR

Handwritten signature